



The Place for Ideas

ITALIA

Design by Favaretto & Partners

Stile sinuoso in un contesto di silenziosa creatività. Italia racconta la lineare determinazione e l'avvolgente accoglienza di una seduta pensata per ambienti di lavoro dal design minimal e ricercato. Disponibile in tre varianti, Italia coccola il corpo con le sue curve modellate e le cuciture a vista regalando personalità, stabilità e comfort alla quotidianità della persona che la utilizza.

Sinuous allure in creative silence. Italia is the story of linear determination and a welcoming embrace for refined, minimalist offices. Available in three different versions, Italia cocoons the body with its curves while visible seams lend a sense of personality, stability and comfort to daily life.





ITALIA
Modello IT30 / IT30 model





ITALIA
Modello IT22 / IT22 model





ITALIA

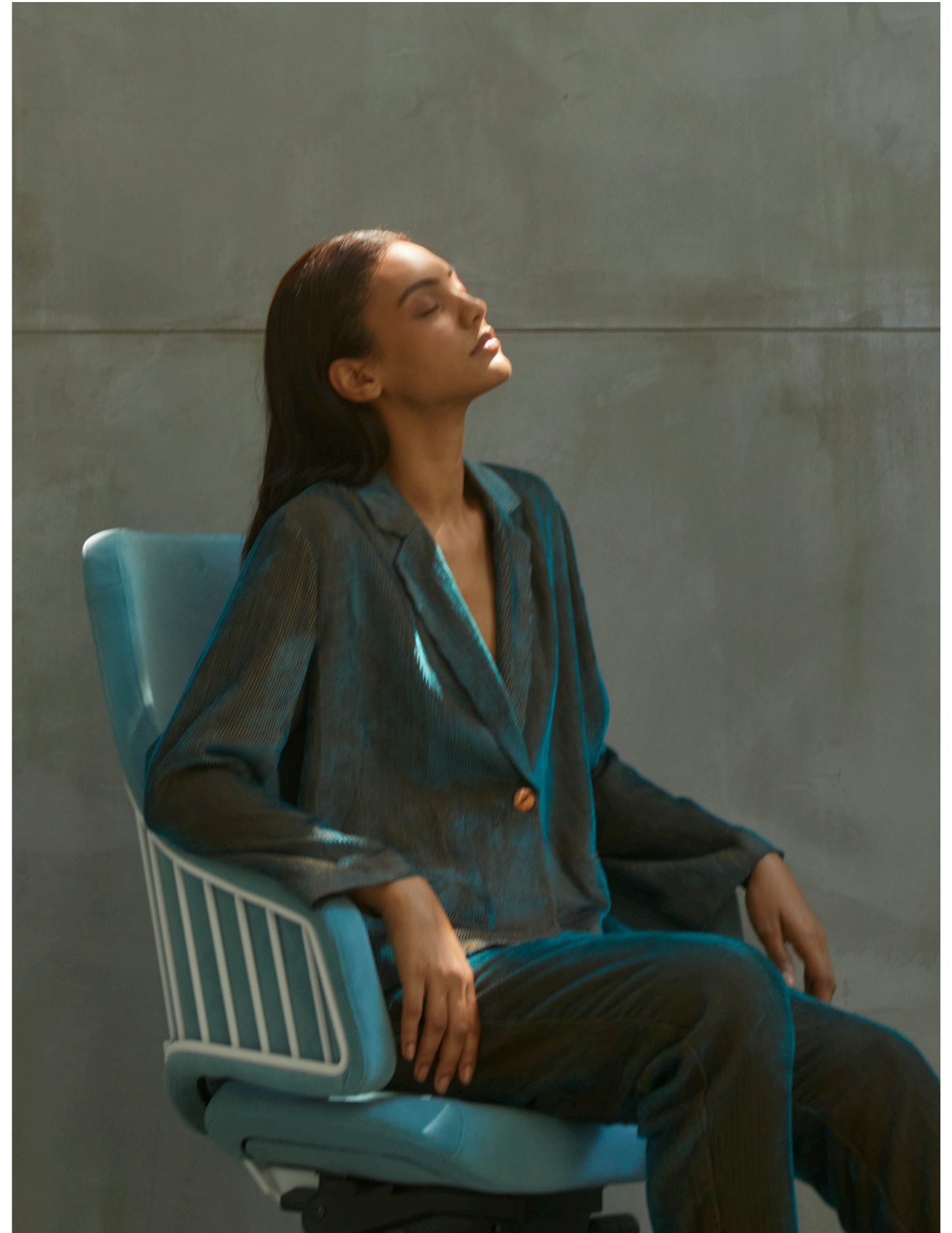
Modelli IT1, IT6, IT22, IT30, IT41, IT46 / IT1, IT6, IT22, IT30, IT41, IT46 models



ITALIA
Modello IT6 / IT6 model



ITALIA
Modello IT6/ IT6 model





1.



2.

1. Meccanismo synchron con antishock e traslatore/ Synchronized mechanism with antishock and sliding seat.

2. Meccanismo synchron autopesante con antishock e traslatore/ Weight-sensitive synchronized mechanism with antishock and sliding seat.



1.



2.

1. L'altezza della sedia si regola girando l'apposita leva sia per il meccanismo synchron sia autopesante/
The seat height is adjusted by turning the provided lever for both mechanisms.

2. Il movimento di schienale e sedile è sincronizzato con 16° di oscillazione per lo schienale e 4° per il sedile/
The backrest and the seat are synchronized with 16° of inclination for the backrest and 4° for the seat.





ITALIA
Modello IT6 / IT6 model





ITALIA
Modello MV1/ MV1 model



ITALIA
Modello MV8 / MV8 model

ITALIA

Design by Favaretto & Partners
Sedute direzionali/ Executive chairs

Steel



IT1

L 69 x W 66 x H 125 cm



IT5

L 62 x W 64 x H 125 cm



IT6

L 69 x W 66 x H 98 cm



IT10

L 62 x W 63 x H 98 cm

Extra soft



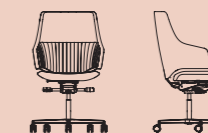
IT21

L 69 x W 66 x H 125 cm



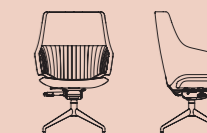
IT25

L 62 x W 64 x H 125 cm



IT26

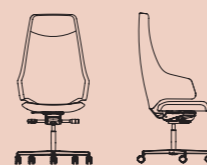
L 69 x W 66 x H 98 cm



IT30

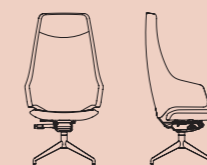
L 62 x W 63 x H 98 cm

Flat



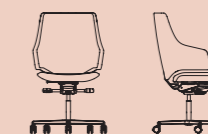
IT41

L 69 x W 66 x H 125 cm



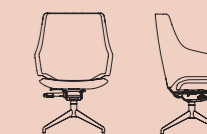
IT45

L 62 x W 64 x H 125 cm



IT46

L 69 x W 66 x H 98 cm



IT50

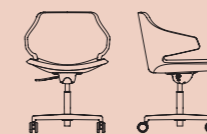
L 62 x W 63 x H 98 cm

Meraviglia



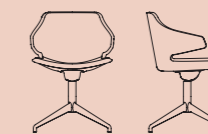
MV1

L 55 x W 56 x H 80 cm



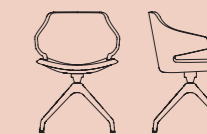
MV3

L 55 x W 54 x H 71 cm



MV4

L 55 x W 54 x H 80 cm



MV8

L 55 x W 54 x H 80 cm

Tutte le finiture, i tessuti, i meccanismi, le caratteristiche specifiche e gli accessori di ogni modello sono consultabili sul listino/
All finishes, fabrics, mechanisms, specific features and accessories of each model are available on the price list.

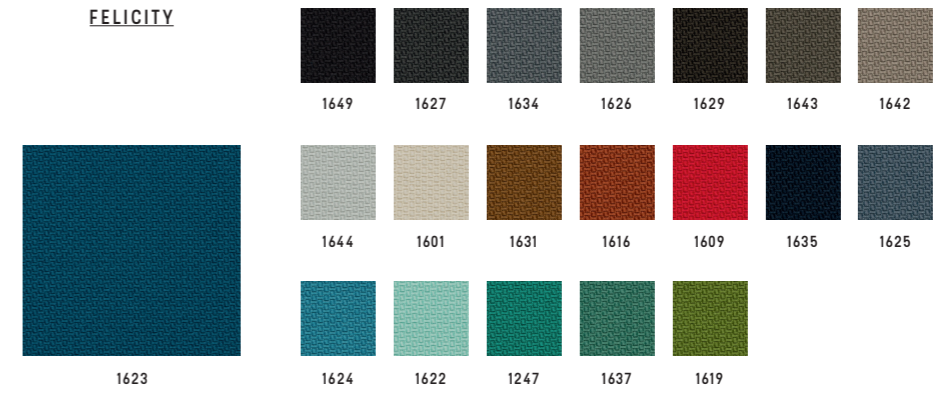
MATERIALI

MATERIALI/ MATERIALS



GABRIEL

FELICITY

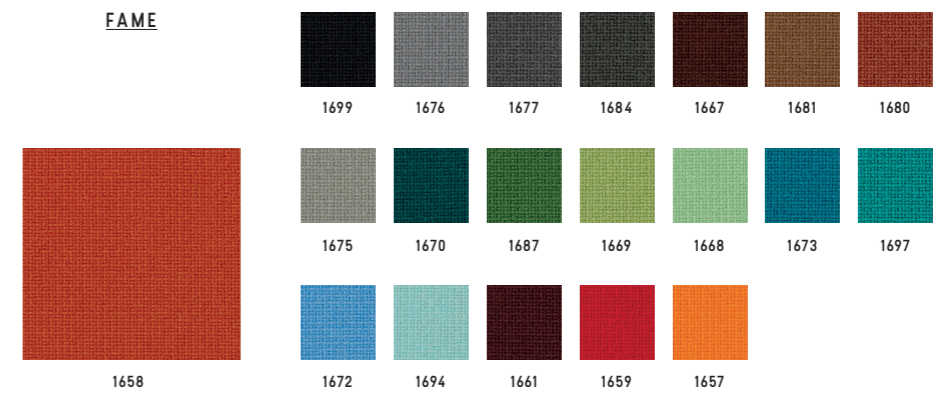


Categoria/ Category
Composizione/ Composition
Note/ Notes

C
100% polyester
100% recycled fabric



FAME



Categoria/ Category
Composizione/ Composition

D
95% New Zeland wool + 5% polyamide



BREEZE FUSION



Categoria/ Category
Composizione/ Composition

K
88% New Zeland wool + 12% polyamide



GABRIEL

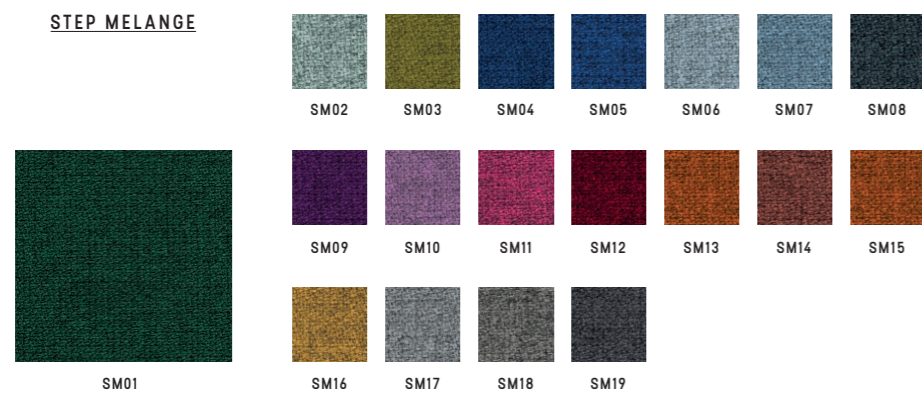
SAVOY



Categoria/ Category K
Composizione/ Composition 100% Trevira CS



STEP MELANGE

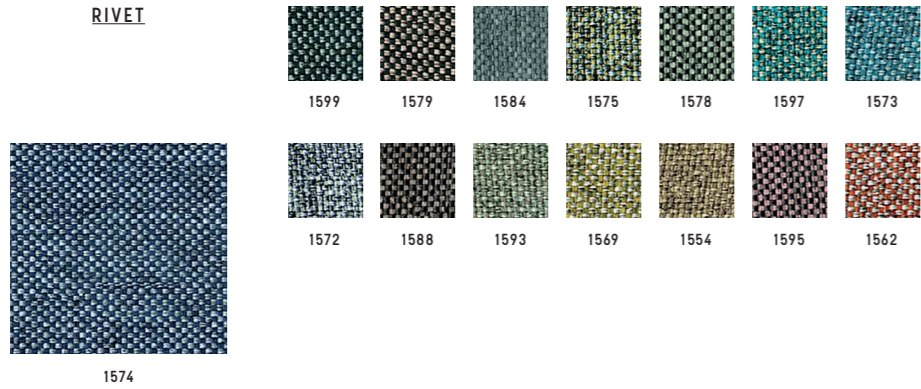


Categoria/ Category D
Composizione/ Composition 100% Trevira CS



CAMIRA

RIVET



Categoria/ Category **C**
 Composizione/ Composition 100% reprove
 Note/ Notes 100% recycled fabric



KVADRAT

RELATE



Categoria/ Category **D**
 Composizione/ Composition 100% trevira CS
 Note/ Notes 100% recycled fabric



BLAZER



Categoria/ Category **K**
 Composizione/ Composition 100% virgin wool



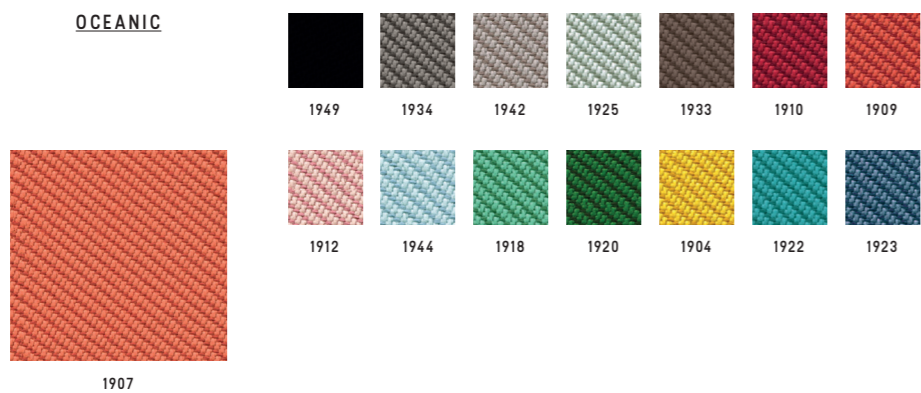
REMIX 3



Categoria/ Category **K**
 Composizione/ Composition 90% new wool worsted + 10% nylon



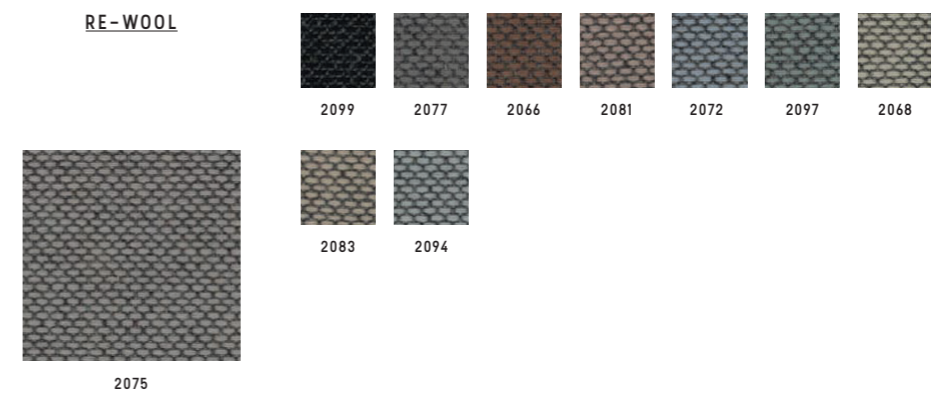
OCEANIC



Categoria/ Category **K**
 Composizione/ Composition 100% post-consumer recycled polyester, including 50% SEAQUAL yarn



RE-WOOL

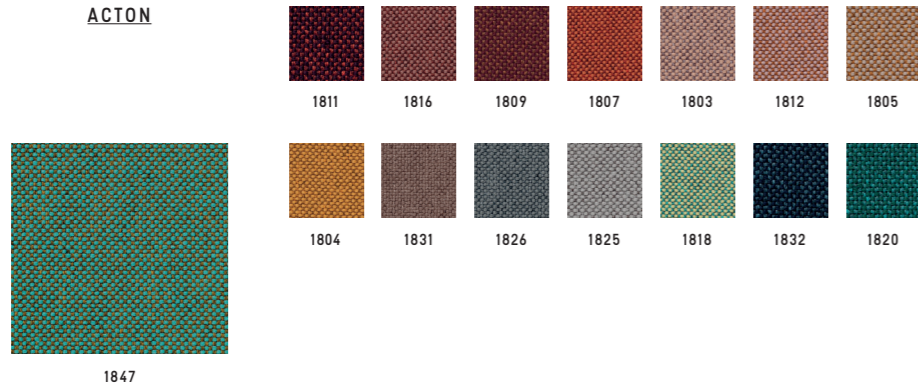


Categoria/ Category **K**
 Composizione/ Composition 45% recycled wool + 45% new wool worsted + 10% nylon



VESCOM

ACTON



Categoria/ Category D
 Composizione/ Composition 100% polyester



LIMONTA

TRESIGALLO



Categoria/ Category K
 Composizione/ Composition 22% Acrylic + 22% wool + 22% polyester
 13% cotton + 14% viscose + 17% wool



G.S.

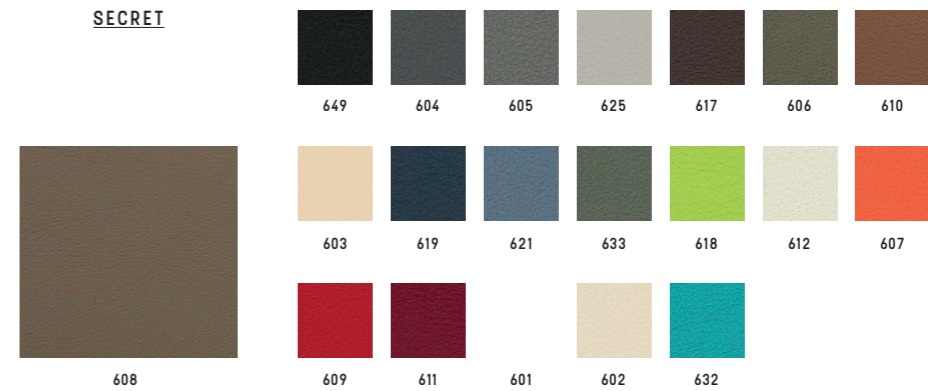
SURROUND



Categoria/ Category B
 Composizione/ Composition 87,5% polyvinylchloride (PVC) + 12,5% cotton
 Note/ Notes Antibacterial



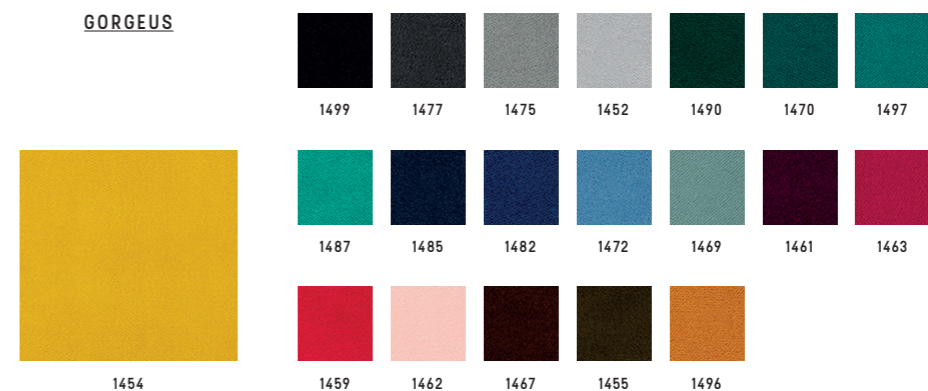
SECRET



Categoria/ Category C
 Composizione/ Composition 76% polyvinylchloride (PVC) + 2% polyurethane (PU) + 22% polysulfone (PES)



GORGEUS

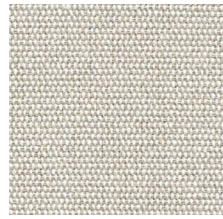


Categoria/ Category D
 Composizione/ Composition 100% poliestere FR



CHIOCCARELLO

DISCO COEX



1402

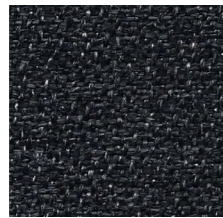


Categoria/ Category
Composizione/ Composition

D
70% cotton + 20% acrylic + 5% viscose
5% linen, 0% formaldehyde



EXPO



1379

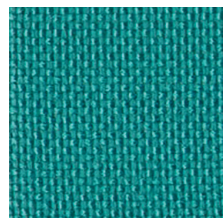


Categoria/ Category
Composizione/ Composition
Note/ Notes

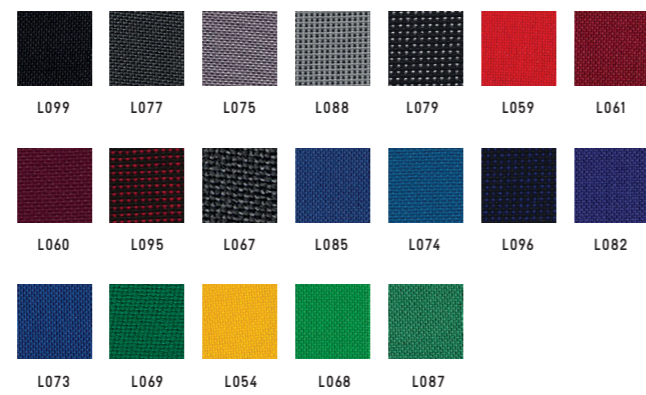
B
100% propitex Fr bacteriostatic
Bacteriostatic



MADRID



L097

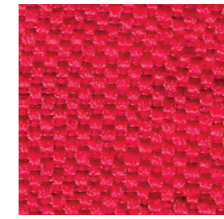


Categoria/ Category
Composizione/ Composition

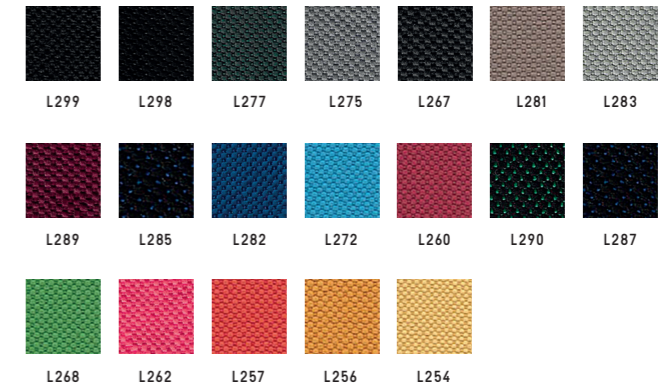
A
100% polypropilene FR



SALÒ



L259



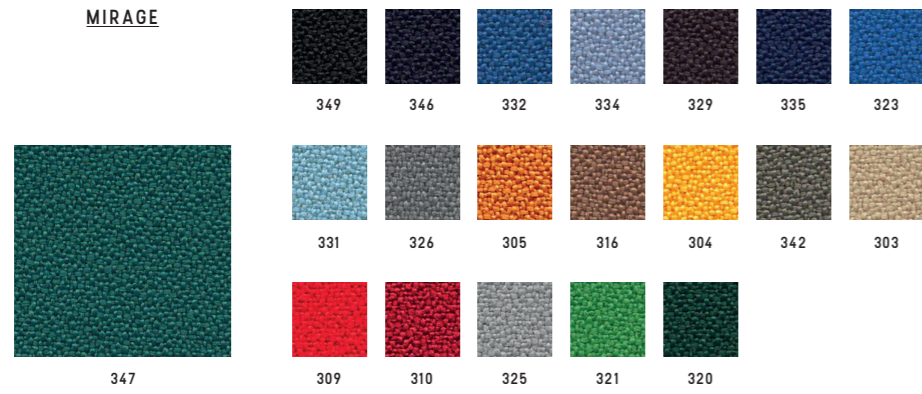
Categoria/ Category
Composizione/ Composition

B
100% polyester FR



PUGI

MIRAGE

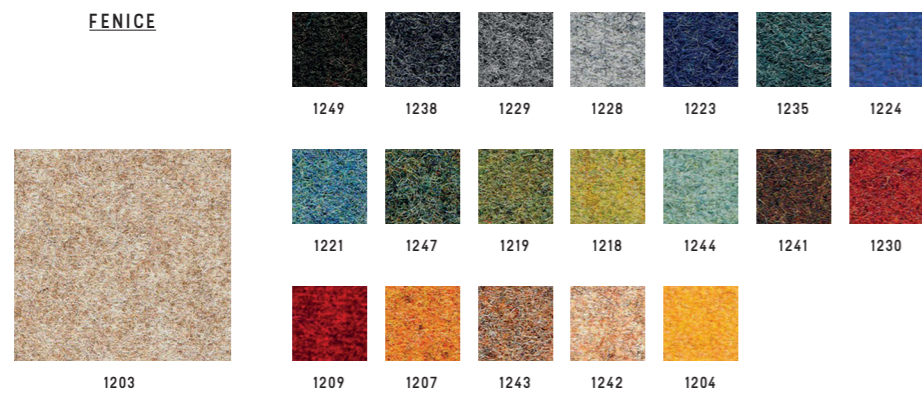


Categoria/ Category
Composizione/ Composition

B
100% polyester FR



FENICE



Categoria/ Category
Composizione/ Composition

C
75% wool + 25% polyamide



BISENTIUM



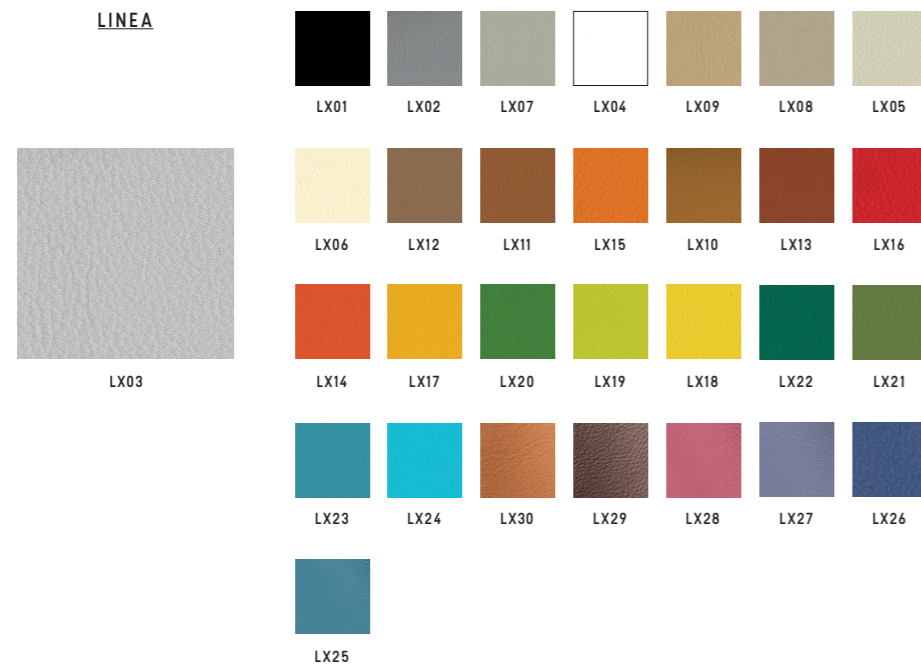
Categoria/ Category
Composizione/ Composition

K
30% wool + 28% polyester + 26% polyamide
16% silk



MASTROTTO

LINEA

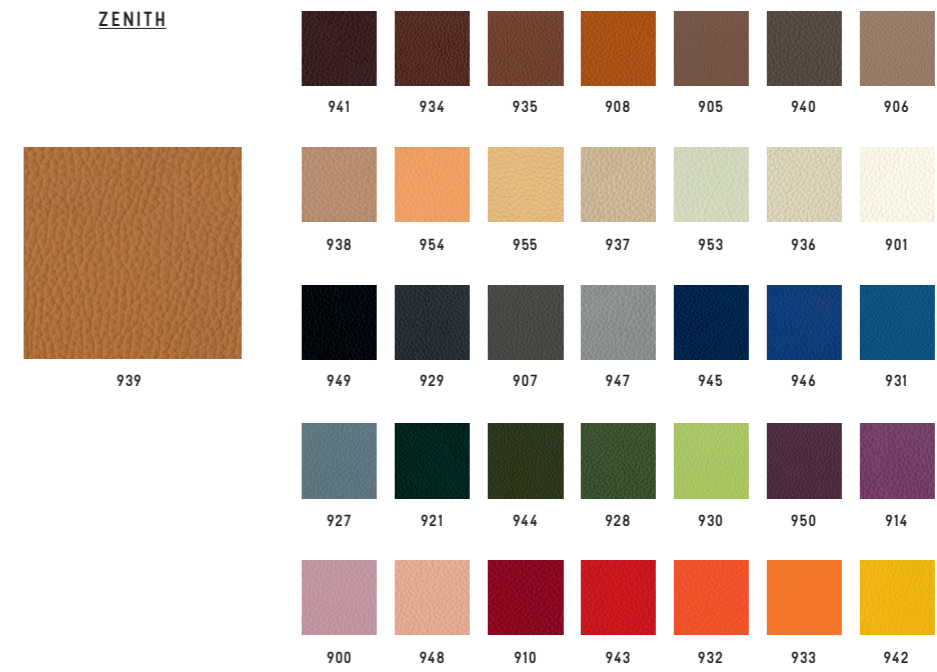


Categoria/ Category
Composizione/ Composition

TOP (pieno fiore)
Bovine leather



ZENITH



Categoria/ Category
Composizione/ Composition

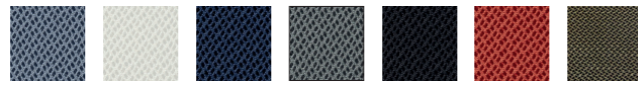
TP
Bovine leather



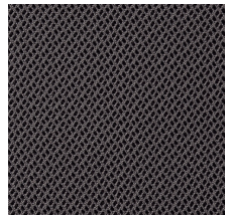


RETI TRIDIMENSIONALE

RHYTHM



TAZ TBI TBL TGR TNE TRO TTO



TAN

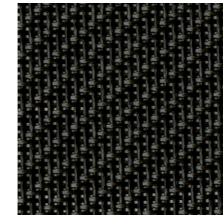


TVD

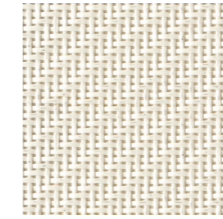
Categoria/ Category D
 Composizione/ Composition 100% polyester



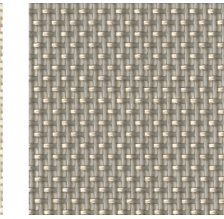
CATEGORIA L/
 CATEGORY L



849



801

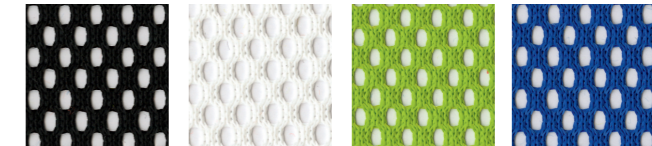


825

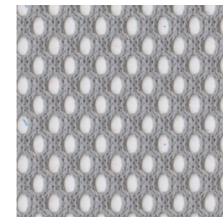
Categoria/ Category L
 Composizione/ Composition 73% PVC + 27% poliestere/ 73% PVC + 27% polyester
 849-801: Light, Nulite, Smartlight, Pop,
 825: Light, Nulite



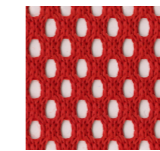
CATEGORIA R/
 CATEGORY R



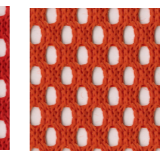
NE BI VD BL



GR



RO

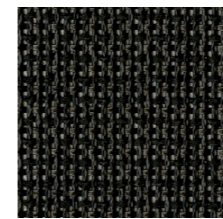


AR

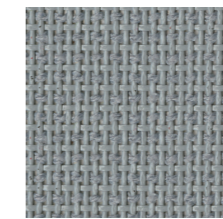
Categoria/ Category R
 Composizione/ Composition 100% poliestere/ 100% polyester
 Solo per Aire Jr, Post, Pop, Switch/
 Only for Aire Jr, Post, Pop, Switch



CATEGORIA Z/
 CATEGORY Z



NE



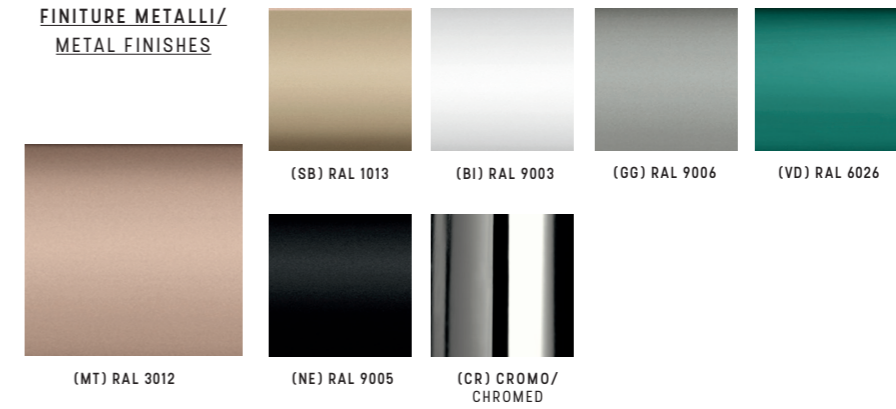
GR

Categoria/ Category Z
 Composizione/ Composition 60% PVC + 40% poliestere/ 60% PVC + 40% polyester
 Solo per Overtime Evo, Extralight/
 Only for Overtime Evo, Extralight





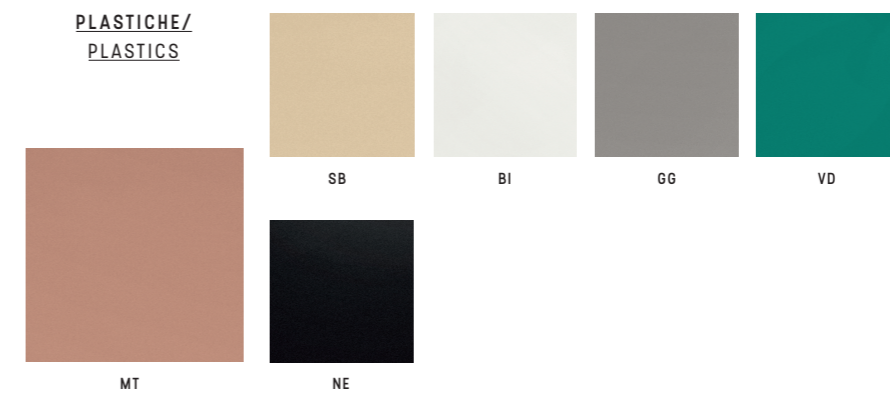
FINITURE METALLI/
METAL FINISHES



Categoria/ Category

FE

PLASTICHE/
PLASTICS



Categoria/ Category

PE

LEGNO/
WOOD



Faggio/ Beech

Rovere/ Oak

Noce/ Walnut

Wenge'

Standard

A progetto/ For customized projects

Categoria/ Category
Composizione/ Composition

LE

Legno massello di faggio in colore naturale/ Solid beech wood natural finish.
Legno massello di rovere con verniciatura di tipo acrilico in vari colori/ Solid oak wood natural finishes.

